

#BringTheRevolution

1340 R

SKID STEER LOADER



Engine
Yanmar 4TNV88

Rated Operating Load
612 kg (1340 lb)

 **MANITOU**
HANDLING YOUR WORLD

Why skid-steer loaders?

A skid steer loader can perform a range of tasks, from loading and lifting to demolition and debris removal to excavation and grading.

- **Compact But Powerful**

As compared to other construction equipments a Skid steer loader is compact in size yet powerful machine. It can work in narrow spaces where it is impossible for other construction machineries to enter

- **Cost Optimization**

Compared to large equipment, a skid steer loader performs similar tasks in a faster, productive and in a very cost effective way

- **Versatility is the key**

With wide range of attachments available a Skid Steer loaders can be easily modified, to perform several different operations, saving time, labour & money

1340 R SKID STEER LOADER



Radial-lift design

Offers enhanced performance in excavating, grading and digging below grade applications. Due to the radial lift path, the maximum reach is greater at the middle of the lift height.

Rated operating capacity

Standard: 612 kg



Yanmar Tier III Engine

Powerful Yanmar Tier III 4-cylinder naturally aspirated Diesel Engine [Yanmar 4TNV88]

Overall height
1826 mm

Lifting height
2794 mm

Operating capacity
612 kg

POWER BOOM

Low-profile boom design offers optimal side-to-side visibility.

FRONT DOOR

Front Door as Standard Fitment

EASY ACCESS TO ENGINE

Large Rear Engine cover with hinged rear door

EASY ENTRY EXIT

Dual grab handles

EXCELLENT FORWARD REACH

1340 R provides excellent forward reach at the middle of the lift path. This provides excellent performance for loading flatbed trucks backfilling or dumping over a wall.



COMPACT AND SAFE

Designed to work in compact spaces. Safety features that protects your machine and operator



Easy transport

With an operating weight of only 2200 kg, the 1340 R can be easily towed on a trailer behind a standard truck



Level I ROPS/FOPS

Level I FOPS are standard, which provides added levels of protection for the operator.

Comfort & Operator safety

- **Visibility**

Wide opening in the front of the machine and large screen windows provide high visibility for increased safety and precise load placement.

- **Operator Presence**

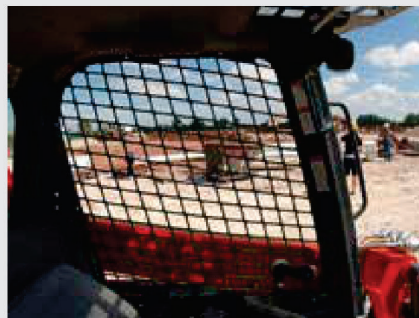
The machine safety system allows operation only when the user is on the seat and the restraint bar is lowered into position.

- **Easy entry and exit**

Large entry area allows for easy access to the operator station.

- **Hydraloc**

Automatic interlock system locks lift, tilt & drive systems when the operator leaves the seat, increasing operator safety.



Excellent views from all sides for safety and precise operation

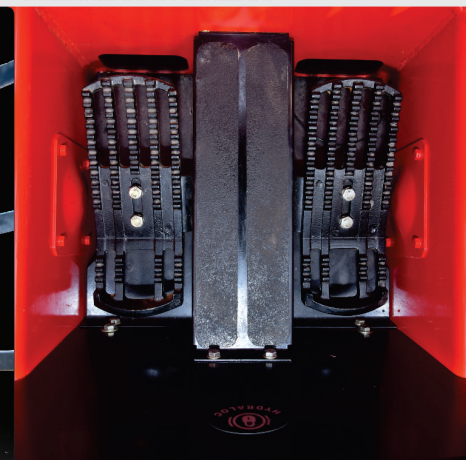
Excellent visibility to the front, sides and rear of the machine allow for precise placement of loads and reduced jobsite incidents. A highmounted seat provides an excellent vantage point to the attachment and cutting edge.



- **Instrumentation @Eye Level**



- **Smooth Foot Control**



Easy Maintenance

HIGH UPTIME PUTS MONEY IN YOUR POCKET

● TILTABLE ASSEMBLY

With gas-spring assist for easy internal access to the pumps, hydraulic valve bank and drive motors.

● SWING-OUT REAR DOOR

Rear door easily opens on hinges, allowing full access to filters and fluid reservoirs for servicing and maintenance.

● SAFETY RESTRAINTS

Innovation restraints allow for secure positioning of the lift arm and cab in maintenance positions. Restraints can be secured in position by one person.

● SERVICE MADE EASY

with combination of smart engineering & low-maintenance components.

● LARGE ENGINE COVER

Cover is hinged and positioned by gas-spring to assist lifting and holding in place, and allows for easy return to closed position.

● Easily removable chain cover for maintenance.

● FRONT CHASSIS CLEANOUT

Removable plate for easy cleanout of the foot area.

#BringTheRevolution

MANITOU
HANDLING YOUR WORLD

Get attached

Manitou Skid loaders offer an exceptional balance of power and maneuverability, and they can adapt to nearly any task with a wide range of attachments available.

1340 R SKID STEER LOADER

Pallet Fork



Rock breaker



Sweeper Collector



Multi Purpose Bucket



Auger with Mount



Backhoe attachment



Bucket with Grab



Muck Fork



Dozer blade



add many more....

**Attachments for
all your material
handling needs**

All-Tach®

All models feature the easy-to-use all-tach® (universal-style) attachment mounting system compatible with most allied attachments.

Heavy duty mounting plate
design for increased rigidity over tube style.



Hydraulic Power

**Easy Access Flat-Faced
Couplers.**
Connect hoses from attachment
to the couplers

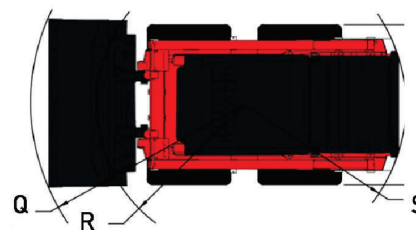
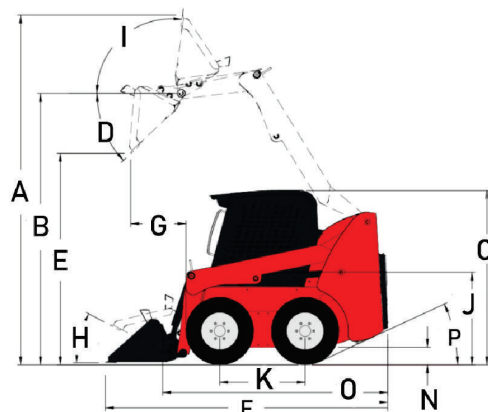
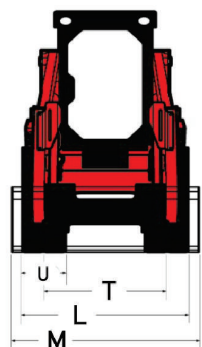
Technical Specifications

1340 R SKID STEER LOADER

Capacities		Metric
Rated Operating Capacity		612 kg
Operating Weight - Approximate		2200 kg
Tipping capacity		1224 kg
Weight and dimensions		Metric
Overall Operating Height - Fully Raised mm (in)	A	3584 (141.1)
Height to Hinge Pin - Fully Raised mm (in)	B	2794 (110)
Overall Height to Top of Rops mm (in)	C	1826 (71.8)
Dump angle at full height	D	42 °
Dump height mm (in)	E	2197 (86.4)
Overall length with bucket mm (in)	F	2952 (116.2)
Dump reach at full height mm (in)	G	528 (20.7)
Rollback at ground	H	29 °
Rollback Angle at full Height	I	99 °
Seat to ground height mm (in)	J	853 (33.6)
Wheelbase mm (in)	K	923 (36.3)
Overall width less bucket mm (in)	L	1346 (53)
Bucket Width mm (in)	M	1562 (61.5)
Ground clearance mm (in)	N	211 (8.3)
Overall length - Less Bucket mm (in)	O	2314 (91.1)
Departure angle	P	29 °
Clearance Radius - Front with Bucket mm (in)	Q	1758 (69.2)
Clearance Circle - Front without Bucket mm (in)	R	1102 (43.4)
Clearance Circle - Rear mm (in)	S	1484 (58.4)

Performances	Metric
Travel speed (unladen)	10.70 km/h
Wheels	Metric
Standard tyres	10X 18.5 - 10 PR Heavy Duty
Transmission type	Fully hydrostatic
Number of drive wheels	4
Engine	Metric
Engine brand	Yanmar
Engine model	4TNV88
Engine norm	BS-III
Gross Power (HP)	49 HP
Max. torque / Engine rotation	142 Nm / 1600 rpm
Battery	12 V
Starter (kw)	3 kW
Hydraulics	Metric
Auxiliary Hydraulic Pressure	190 bar
Tank capacities	Metric
Fuel tank	47 l
Displacement	2.20 l
Reservoir Capacity Hydraulics	30.30 l
Coolant system capacity	7.60 l
LH Chain case	8.25 l
RH Chain case	8.25 l
Standard Fitment	
Front Door	
Backup Alarm	
Options Available	
Solid Flex tyres	
Easy Manager	

Dimensional Drawing





Follow Us @



Effective Date: Feb, 2022. All dimensions, weights & timings are variable within 1.5%. Company reserves the right to change specifications without prior notice. The illustration do not necessarily show the standard version of the machine. Product specifications & prices are subject to change without notice or obligation. The photographs and/or drawings in this document are for illustrative purposes only. Refer to the appropriate Operator's Manual for instruction on the proper use of this equipment. Failure to follow the appropriate Operator's Manual when using our equipment or to otherwise act irresponsibly may result in serious injury or death. The only warranty applicable to our equipment is the standard written warranty applicable to the particular product & sale & we make no other warranty, express or implied.



Manitou South Asia Pvt. Ltd.

Regd. Office: 1st Floor, Plot No. A-10, Block-B1, Main Mathura Road, Mohan Co-op Indl. Estate, New Delhi - 110044
Tel.: 011- 407 42701 E-mail: info.mind@manitou-group.com Web: www.manitou.com



1800 103 7600

Your dealer:

